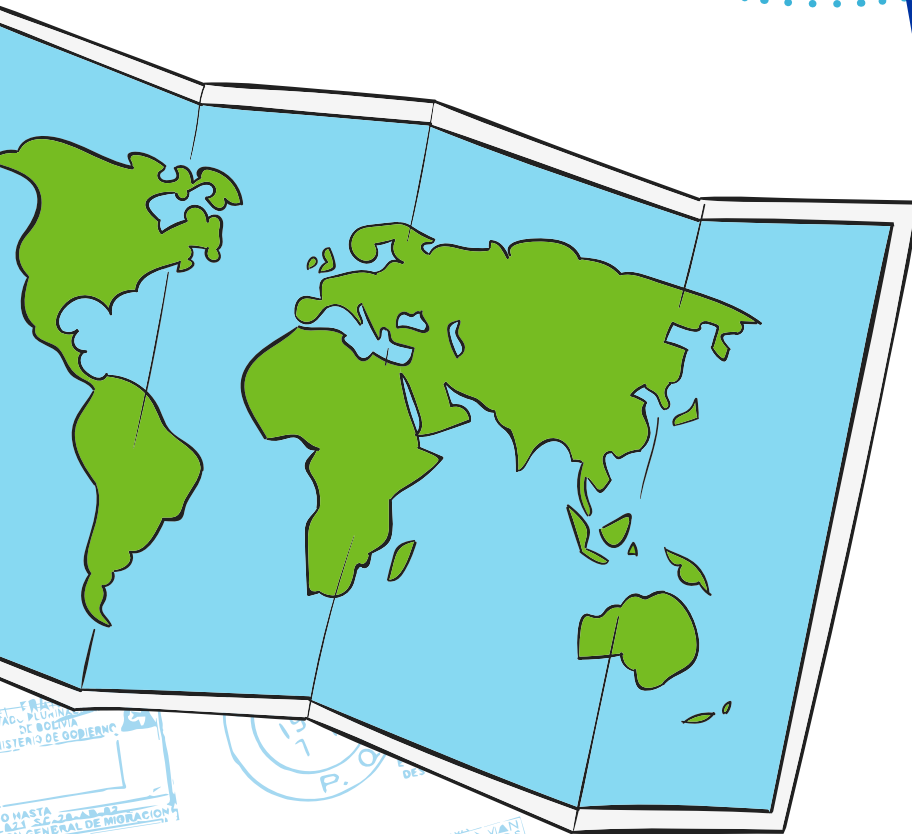


# Guides Go **GLOBE** **TROT**TING



## Welcome to World Guiding & the exciting world of WAGGGS!

There are currently 153 countries that are members of WAGGGS (May 2021).

Join us as we travel virtually to some of these members. Let's discover more about Global Guiding – the lifestyles and culture of Guides in countries that make up our 5 World Regions.

Have a blank map of the world with you so that you can mark the locations of the countries that we visit during our globetrotting odyssey.



# Botswana

A landlocked country in the centre of Southern Africa with fascinating landscapes unlike anywhere else on the continent.

## GENERAL

1. On a map of Africa, locate Botswana.
2. Name the capital of Botswana.
3. What is the official currency of Botswana?



4. English is a common language spoken. However, which language is considered the country's national language?
5. Which massive Desert covers more than 70% of Botswana?
6. Draw the flag of Botswana. What do the colours stand for?
7. Botswana has 4 national parks; Chobe National Park is the third largest. The Park is most famous for its elephant population. Today, it is home to over 50,000 elephants - which is believed to be the highest concentration of elephants found anywhere in the world. What other animals can be found in Chobe? Name at least 5.

## GIRL GUIDING

1. To which World Guiding Region does Botswana belong?
2. How many national Girl Guide and Girl Scout Organisations (also called Member Organisations) can be found throughout the continent and Region?
3. By 1945 there was one Movement for all the girls in Botswana and members were known as Girl Guides and Sunbeams. What are the 2 sentences that make up the Botswana Sunbeam Law?



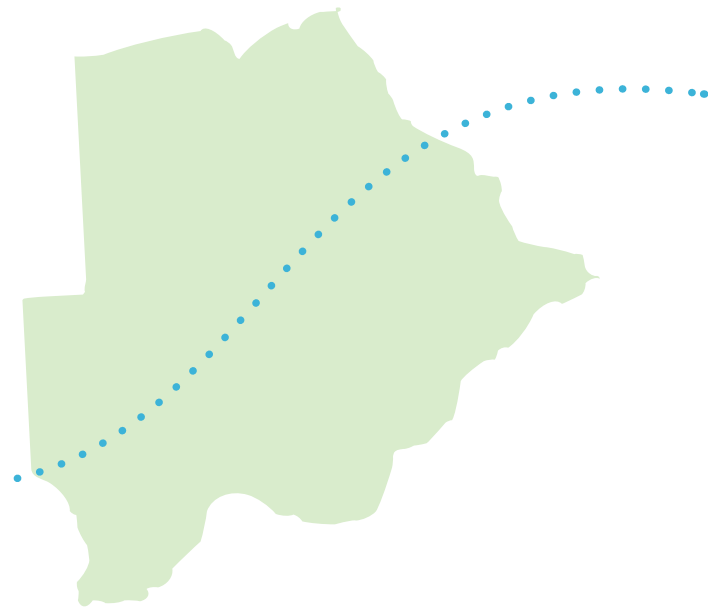
4. This is the Guiding emblem for Botswana. Can you recreate it and use it in an activity such as a jigsaw puzzle? You may wish to include the World Flag to add to your game.



## IN DEPTH

*Research the following aspects of culture and incorporate them into your unit program*

1. Research the staple foods of Botswana and its national dish of seswaa. Practise cooking this over an open traditional fire.
2. Botswana culture has many crafts including basket weaving and pottery. Can you find out about traditional clay pots and how they are used in people's homes, villages and have an attempt at creating some pottery? (If necessary, use plasticene or modelling clay as an alternative)
3. Botswana is known for its wildlife. Chose a favourite species and find out how poaching is affecting its future and how countries like Botswana are trying to eliminate this into the future.



4. Botswana is known for its spectacular sunsets. Can you paint or draw your version with the profile of a giraffe or another animal in your picture?
5. Pretend you are a travel agent; perform a skit or play with a friend and role play selling a safari to Botswana.
6. Botswana has enormous deposits of diamonds. How has this impacted Botswana?



## RESOURCES

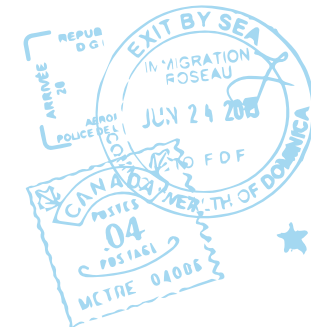
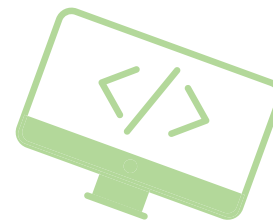


[Member Organisation - Botswana | WAGGGS](#)

[Facts about Botswana for Kids | Botswana | Africa | Geography | People](#)

[Culture and Traditions of Botswana - Art For All, Cultural Issues](#)

[The Ultimate Botswana Wildlife Guide](#)



## HELPFUL NOTES



You can choose to do this as a Unit program – or Guides can work on it individually.

Should your Guides enjoy working on badges, here are some suggestions for linking the global activities to the recognition system.

### 1. DISCOVER A CHALLENGE

#### GEMSTONES

There are relevant clauses in the “People” category for each Gemstone

### 2. EXPLORE A CHALLENGE

#### FAITH AWARENESS

Find out and share the Promise and Law from another country

#### GUIDING

Take part in an activity from one of the World Guiding Regions

#### LIFE SKILLS

Make a collection of recipes and share your favourite with others

#### SCIENCE & TECHNOLOGY

Discover how nature works by investigating a natural land form

#### THE ARTS

Investigate & create a traditional craft from another country, listen to and enjoy different music styles and share your experience

#### WORLD

Lifestyle investigation, exchange messages, plan an imaginary trip, widen your understanding of the world

### 3. CREATE A CHALLENGE:

- Feet (dancing styles)
- Food
- Girls (international issues)
- Hands
- Numbers (foreign currencies)
- People
- The Arts
- World

### 4. ACHIEVE A CHALLENGE:

- Advocacy 1 & 2
- World Guiding 1 & 2
- Life Skills 2
- Leadership 3

### 5. AWARDS –

Junior BP, BP, Queens Guide and OBP  
Award all have sections on World Guiding

**Guides Go**

**GLOBE**

**TROTTERING**

